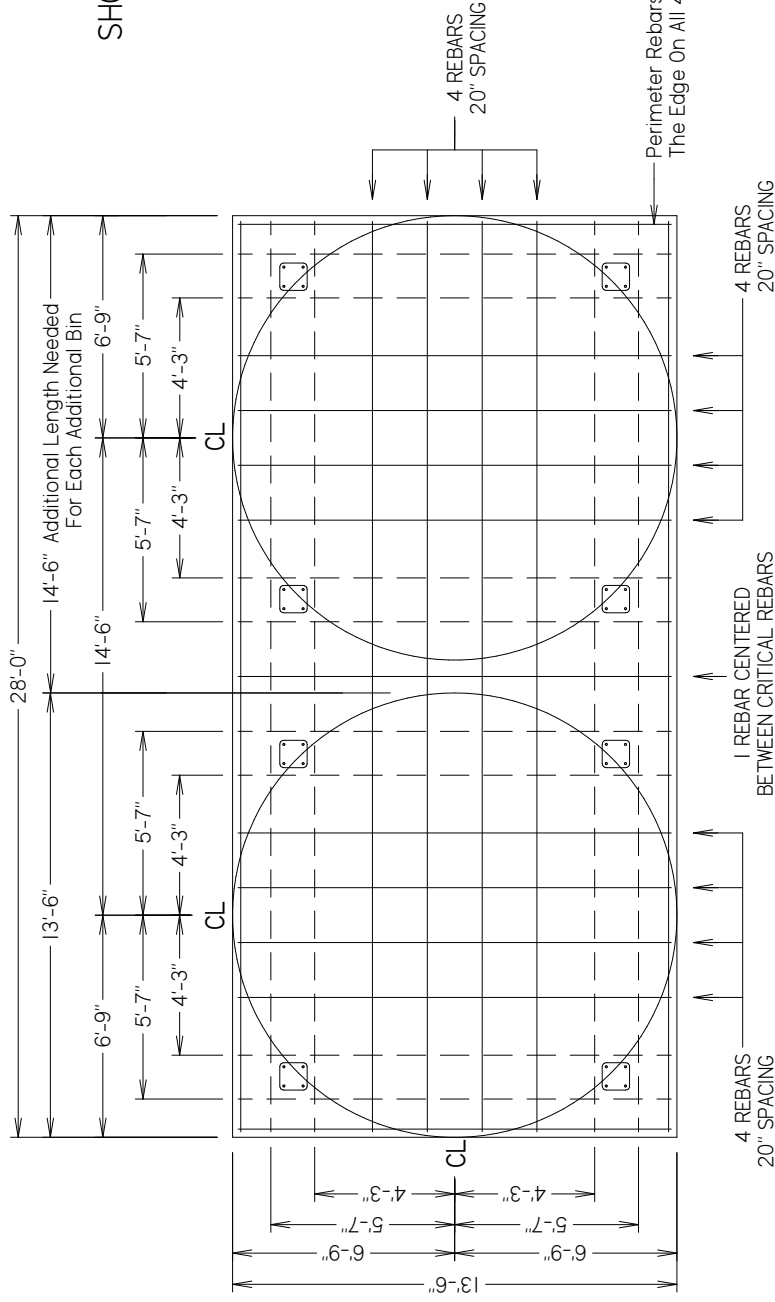
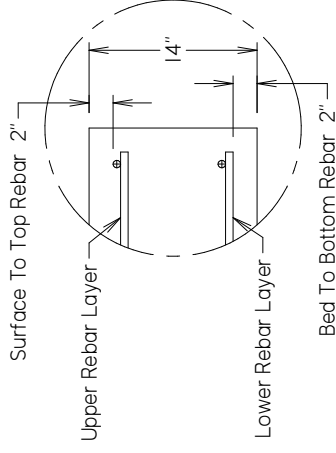


LOCATION OF REBAR

DISCLAIMER: Concrete foundations are only as good as the soil conditions and bed preparation on which they are constructed. It is the customer's responsibility to attain necessary permits, to contact an area contractor / engineer knowledgeable of the bed conditions and requirements of the bin site, and to establish the final design of the site preparation and foundation. Engineering drawings if required are the responsibility of the customer. Schuld / Bushnell will not be held liable for a concrete foundation failure. These foundation drawings are provided as a guideline only. The placement of rebar represented by dashed lines (- - - - -) is critical to facilitate drilling adequate depth anchor holes without interference from rebar.



SHOWN WITH 12" BETWEEN BINS



Concrete Pad Cross Section View
2 Layers of Rebar Required

NOTE: USE 3,500 PSI CONCRETE AND 5/8" REBAR

Bin Quantity	Pad Length	Pad Width	Pad Depth	Concrete Required For Exact 14" Bed Depth	Rebar Required
1 Bin	13.5'	13.5'	14"	7.9 cu. yd.	527 ft.
2 Bins	28'	13.5'	14"	16.4 cu. yd.	1,054 ft.
3 Bins	42.5'	13.5'	14"	24.8 cu. yd.	1,581 ft.
4 Bins	57'	13.5'	14"	33.3 cu. yd.	2,108 ft.
5 Bins	71.5'	13.5'	14"	41.8 cu. yd.	2,635 ft.
6 Bins	86'	13.5'	14"	50.2 cu. yd.	3,162 ft.

* Add additional concrete for uneven or greater bed depth.
* Add additional rebar for scrap and splice overlaps.

FOUNDATION FOR 13.5' SEED BINS

SCHULD

BUSHNELL

P.O. BOX 179 • 380 EAST MAIN STREET • BUSHNELL, ILLINOIS 61422
Ph: 309-772-3106

FOUNDATION FOR 13.5' SEED BINS

DRAWN BY:
R. NORRIS

DATE:
21 OCT 2016

PAGE 1 OF 1